



Welsh Pétanque Association

LEAGUE AND LEAGUE CUP/PLATE RULES

WPA/033/24

Version 2.3

May 2026

Author: WPA Management Committee

Owner: League Secretary

Welsh Pétanque Association

LEAGUE AND LEAGUE CUP/PLATE RULES



Document Amendments

Date	Section No.	Page No.	Comments	Version No.
Feb 2024	5 8		Issued as Document WPA/033/24 in a new format with numerous minor amendments. Major alterations to 2023 Rules are: Section revised to provide some limited flexibility in rearranging fixtures. Section added to provide rules regarding promotion & relegation.	0.0
09/02/2024			Draft accepted by the Executive.	0.0
09/02/2024			Rules Published	1.0
15/03/2024	3		Cross reference in Clause 3.14 corrected	1.1
15/03/2024	App 1		Minor corrections to Flow Chart	1.1
02/04/2024			Corrections accepted by Executive	1.1
Feb 2025			Reissued for 2025 Season and onward; no amendments made to 2024 v1.1 edition; will only be reissued when amended	2.0
06/02/2026	All		References to "Executive Committee" amended to "Management Committee" following adoption of Constitution v6 at 2026 AGM	2.1
07/05/2026	0 6		Rule 0.2 amended and 0.3 added to reflect current documentation Rules 6.3 & 6.4 added and following Rules renumbered	2.2
18/05/2026	6		Rule 6.3 amended, Rule 6.4 deleted and following Rules renumbered	2.3

Certified as a true copy of the **LEAGUE AND LEAGUE CUP/PLATE RULES** of the Welsh Pétanque Association as adopted by the Management Committee on **18 May 2026**

Welsh Pétanque Association

LEAGUE AND LEAGUE CUP/PLATE RULES



Contents

0. Related Documents.....	1
1. Definitions.....	1
2. General.....	2
3. Teams.....	2
4. Play.....	4
5. Fixtures.....	5
6. League Cup/Plate – Particular Rules.....	7
7. Results Recording & Reporting.....	7
8. Promotion & Relegation.....	8

Appendices

Appendix 1 – Section 5 Flowchart

Welsh Pétanque Association

LEAGUE AND LEAGUE CUP/PLATE RULES



0. RELATED DOCUMENTS

- 0.1. FIPJP Official Rules of the Sport of Pétanque (English Translation) as approved by the FIPJP Executive Committee in December 2020, applicable from 1 January 2021 and available on the WPA website
- 0.2. WPA Constitution v6 or any later amendment as available on the WPA website.
- 0.3. WPA Internal Rules v2 or any later amendment as available on the WPA website.

1. DEFINITIONS

- 1.1. “Club” shall mean a club affiliated with the WPA for the current membership year.
- 1.2. “Team” shall mean any team for which a Club has submitted a League & League Cup/Plate Entry form for the current season and which has been accepted by the WPA.
- 1.3. “Player” shall mean any person eligible to be a member of a Team in accordance with these Rules and the Constitution of the WPA. Among other things, a Player must hold “Full”, “League”, “Honorary” or “Junior” membership of the WPA.
- 1.4. “Named Player” shall mean a Player named by their Club on the League & League Cup/Plate Entry form for the current season.
- 1.5. “Other Player” shall mean any other Player who has not been named by their Club on the League & League Cup/Plate Entry form for the current season.
- 1.6. “League Fixture Grid(s)” shall mean the fixture schedules for the current League Season as indicated in the League Fixture Grid(s) published on the WPA Website.
- 1.7. The “League Season” shall mean the period of weeks in the year when League fixtures are to be played. This period is indicated in the League Fixture Grid(s).
- 1.8. “Result Slip” shall mean the official document for recording the scores at matches as published on the WPA Website.
- 1.9. “Finals Day” shall mean the day on which the final round(s) of the League Cup and League Plate competitions are played normally at a neutral venue

Welsh Pétanque Association

LEAGUE AND LEAGUE CUP/PLATE RULES



2. GENERAL

- 2.1. All Teams entering the League are deemed to have accepted these rules and to be bound by them for the duration of the League season
- 2.2. All Teams are expected to abide by the unwritten rules of common decency and sportsmanship. Do to others only what you would accept to have done to yourself. This is meant to be a fun and friendly League.
- 2.3. All Teams representing a Club shall play their Home fixtures at a single Club venue for the League Season. The only exception to this will be if the Club's terrain is unavailable due to circumstances outside of their control (e.g. unexpected closure of a pub), in which case any change of venue is subject to approval by the Management Committee.

3. TEAMS

- 3.1. All Teams participating in the League and League Cup/Plate competitions must be affiliated to a club currently registered with the WPA. All Players within a Team must be members of that Club and be a Full, League, Junior or Honorary members of the WPA as defined in the WPA Constitution. Any team which fields and ineligible player shall incur the following sanctions:
 - 3.1.1. each game in which the ineligible Player takes part shall be awarded to the opposing Team with a score of 13-0; and
 - 3.1.2. any further sanction that the WPA Management Committee may decide is appropriate in the individual case regarding all the circumstances.
- 3.2. A Team consists of two "doubles" playing under the FIPJP rules and any local rules regarding terrain etc.
- 3.3. Players are members of the Club with whom they are registered with the WPA for the whole League Season including League Cup and Plate competitions unless transferred to another Club (See Rule 3.10) and must hold a WPA licence indicating that they are a member of that Club subject only to the provisions of clause 6.3.1 of the WPA Constitution – Part 2.
- 3.4. Players may only play for the Club with whom they are registered with the WPA and may play for any of the Teams that the Club may enter in the League subject to the provisions of Rules 3.5 to 3.7.

Welsh Pétanque Association

LEAGUE AND LEAGUE CUP/PLATE RULES



- 3.5. Named Players may not play for any other Team in any division.
- 3.6. Other Players may play for any Team from their Club in any division up to 3 times in the League Season. An Other Player who plays 3 times in a season for any Team is deemed to be a Named Player for the Team for which they have played 3 times. Other Players who have become Named Players as result of the application of this Rule may not play for any Team other than the one for which they have become a Named Player. There shall be no distinction between League and League Cup/Plate appearances when applying this Rule
- 3.7. Notwithstanding the provisions of Rules 3.5 and 3.6, if the relevant Team for which the Player plays is in a Division of less than 8 Teams, all references to “3 times” in those Rules shall read “2 times”
- 3.8. A Player may play for one Team only in any one calendar Week. In the case of a rearranged fixture the Player may not play for a Team if he/she played for another Team in the week in which the fixture was due to be played as set out in the League Fixture Grid.

[By way of explanation this means a Player cannot play for Team ❶ in a re-arranged fixture if the Player has already played for Team ❷ in EITHER the calendar week during which the re-arranged fixture is played OR in the calendar week during which the fixture should originally have been played].
- 3.9. Reserves are not allowed in League and League Cup/Plate matches.
- 3.10. In exceptional circumstances, Players may officially “transfer” to another Club during the League Season, but only with the authority of the Management Committee. Once a Player is transferred, they cannot return to their original Club until the end of the following League Season unless authorised by the Management Committee.
- 3.11. Players may move between Clubs in the closed season.
- 3.12. Teams may attend a fixture with less than the full complement of Players. The minimum number allowed is 2 Players.
 - 3.12.1. A team arriving with only 1 Player may choose to wait until a further Player(s) arrive in which case the provisions of Rule 4.4 will apply
 - 3.12.2. A Team attending with 2 players may choose to:
 - 3.12.2.1. wait until a further Player(s) arrive in which case the provisions of Rule 4.4 will apply; or

Welsh Pétanque Association

LEAGUE AND LEAGUE CUP/PLATE RULES



- 3.12.2.2. play all four games with each Player playing 2 games and permitted to throw only 3 boule per end; or
- 3.12.2.3. play only two games, which shall be played as doubles, and forfeit the remaining two games by a score of 0-13 each.
- 3.12.3. A Team attending with 3 players may choose to:
 - 3.12.3.1. wait until a further Player arrives in which case the provisions of Rule 4.4 will apply; or
 - 3.12.3.2. play two games with 2 Players playing 2 games as doubles; and
 - 3.12.3.3. play two games with only 1 Player using 3 boules per end; the same Player shall play both games.
- 3.13. Any Players who arrive after play has commenced shall not be allowed to participate in the fixture.
- 3.14. A Team may only use rule 3.11 for a maximum of three fixtures in a season. On the fourth or subsequent fixture that they arrive with less 2 players they will be deemed to have notified the opposing captain beforehand that they cannot fulfil the fixture and will be subject to the provisions of Rule 5.5.1.

4. PLAY

- 4.1. Teams will play under the FIPJP rules and any local rules regarding terrain etc.
- 4.2. Teams shall play in matching tops. The WPA reserves the right to make spot-checks to ensure compliance. Failure to comply will result in a £20.00 fine being imposed on the Club by the WPA.
- 4.3. Teams should commence play at the latest time of 7.15pm.
- 4.4. If a Team arrives late, the following Rules will apply:
 - 4.4.1. Arrival after 7:15pm but by 8:00pm - One point is awarded to the opposition in each first-round game for every five minutes (or part of five minutes) late in starting play; (e.g. a Team arriving late and starting play at 7.22pm will have two 2 points awarded to the opposition in each first-round game).
 - 4.4.2. Arrival after 8:00pm but by 9:00pm - the two first-round games are forfeited, each with a score of 0-13, and then the similar rules as in

Welsh Pétanque Association

LEAGUE AND LEAGUE CUP/PLATE RULES



4.4.1 will apply; (e.g. a Team arriving and starting play at 8.12pm will have three points awarded to the opposition in each second-round game, in addition to forfeiting their two first-round games).

4.4.3. Non-arrival or arrival after 9.00pm - the two second round games are forfeit, each with a score of 0-13, in addition to forfeiting their two first-round games.

5. FIXTURES

- 5.1. Subject to the provisions of Rules 5.2, 5.3 and 5.9, League and League Cup/Plate fixtures must be played on the date set out in the League Fixture Grid or at the latest by the Sunday following the date set out in the fixture grid provided that both Team Captains agree to a revised date (and the League Fixture Grid shall for the purposes of the application of these Rules be deemed to have been amended accordingly). The Home Team Captain shall immediately inform the League Secretary of any such agreement.
- 5.2. League and League Cup/Plate fixtures may be played before the date set out in the League Fixture Grid with the agreement of both Team Captains. The Home Team Captain shall immediately inform the League Secretary of any such agreement.
- 5.3. Fixtures may be postponed beyond the period allowed under Rule 5.1 only in very exceptional circumstances (eg unplayable pistes, exceptionally inclement weather). Both Team Captains must agree to the postponement and, at the time of postponement, agree on a new date for the fixture which, in any case, shall not be later than 14 days after the date set out in the League Fixture Grid (and the League Fixture Grid shall for the purposes of the application of these Rules be deemed to have been amended accordingly). The Home Team Captain shall immediately inform the League Secretary of any such agreement, who will determine whether or not the postponement was due to “very exceptional circumstances”. If the League Secretary determines that “very exceptional circumstance” does not apply in that case, they will immediately report the matter to the Management Committee, providing details of the reason for the postponement, for its decision which shall be final and binding.
- 5.4. If the Team Captains fail to agree on a new date for a fixture postponed under the provisions of Rule 5.3, the Team adjudged by the Management Committee to be in default will be ejected from the League unless they can prove mitigation to the satisfaction of the Management Committee in which case the Management Committee will impose a new date.

Welsh Pétanque Association

LEAGUE AND LEAGUE CUP/PLATE RULES



- 5.5. If a Team fails to fulfil a fixture either:
- 5.5.1. by notifying the opposing captain beforehand that they cannot fulfil the fixture; or
 - 5.5.2. by having failed to arrive for the fixture or having arrived after 9:00 pm (see Rule 4.4)
- then the fixture shall be awarded to the non-defaulting Team with a score of 4-0 with each game given a score of 13-0.
- 5.6. If the fixture has not been fulfilled, and awarded to the non-defaulting Team in accordance with the provisions of Rule 5.5 and is a League fixture (see Rule 6.3 for League Cup/Plate fixtures):
- 5.6.1. is between teams from the same Club; or
 - 5.6.2. was due to be played in the last 4 weeks of the season
 - 5.6.3. then the League Secretary will determine whether or not the non-defaulting Team gained a significant advantage in promotion or relegation. If the League Secretary so determines they will immediately report the matter to the Management Committee.
- 5.7. In the event that the non-fulfilment of a fixture is reported to the Management Committee by the League Secretary then the Management Committee will, in closed session, confirm or reject the League Secretary's determination that the defaulting Team had gained a significant advantage. If the Management Committee rejects the League Secretary's determination then the awarded result shall stand. If the Management Committee confirms the League Secretary's determination then the Management Committee will come to one of the following decisions:
- 5.7.1. that the fixture should be played on a date specified by the Management Committee, or
 - 5.7.2. that the fixture shall be deemed to be a draw with a score of 2-2 with two games being awarded to each Team each with a score of 13-7.
- 5.8. In the event that a new date for a fixture is imposed by the Management Committee (under the provisions of Rules 5.4, 5.7.1 and 5.8) and the fixture does not take place on the prescribed day/time, the Team adjudged by the Management Committee to be in default will be ejected from the League unless they can prove mitigation to the satisfaction of the Management Committee in which case the Management Committee will impose another new date.

Welsh Pétanque Association

LEAGUE AND LEAGUE CUP/PLATE RULES



- 5.9. In the event that a Team has fixtures awarded against them (under the provisions of Rules 5.5) three times in any season, the Team shall be disqualified from the League unless they can prove mitigation to the satisfaction of the Management Committee.
- 5.10. In the event that a Team is disqualified from the League or a Team is unable to complete its fixtures and withdraws from the League, all fixtures already played by the Team concerned will be deemed void and their results will not be taken into account in calculating League positions for all other Teams.
- 5.11. The Flowchart at Appendix 1 is a graphical representation of the processes in this Section 5. In case of any discrepancy between this Section 5 and the Flowchart this Section 5 shall prevail.

6. LEAGUE CUP/PLATE – PARTICULAR RULES

- 6.1. A Player who has played in the League Cup/Plate in the current League Season becomes 'cup-tied' and may not play for any other Team in the League Cup/Plate in the same League Season.
- 6.2. The Rules relating to Named Players as set out in Rules 3.5 & 3.6 apply equally to the League Cup/Plate and appearances in the two competitions shall be aggregated.
- 6.3. The format of the League Cup/Plate competition in any season may include pool matches and/or single elimination matches. For single elimination matches, in the event that the match ends in a tie, 2 games each, the following will apply:
 - 6.3.1. the winner will be the Team with the higher points: or
 - 6.3.2. if the points-for are equal, the following will apply:
 - 6.3.2.1. the two pairs who played the last of the 4 regular games to be completed will play an additional end on the lane on which they have just played starting from the opposite end to the last end played. The winner of this end shall be awarded the match, always subject to the provisions of paragraph 6.3.4.
 - 6.3.2.2. the throw of the jack shall be decided by the toss of a coin
 - 6.3.2.3. the jack must be marked at all times. In the event that the jack is removed from the area of play (i.e., shot out), it must be replaced in the marked position.

Welsh Pétanque Association

LEAGUE AND LEAGUE CUP/PLATE RULES



- 6.3.2.4. If, after all players have thrown 3 boules, the 2 boules which are nearest to the jack are at an identical distance from the jack and the said 2 boules are 1 from each team, then a dead end shall be declared. A further end shall then be played starting from the opposite end of the lane and the jack shall be thrown by the other team ie the team who did not throw the jack in the first additional end. If the points-for are equal, the following will apply:
- 6.4. For the purposes of the League/Cup Plate, the term “League Fixture Grid” defined in Rule 1.6 shall include the schedule for League Cup/Plate fixtures in whatever format it is published on the WPA Website.
- 6.5. In the event that a fixture in the rounds before Finals Day has not been fulfilled and awarded to the non-defaulting Team in accordance with the provisions of Rule 5.5, or a Team fails to fulfil its fixture(s) on Finals Day then the Named Players from that Team will be excluded from entry to the League Cup/Plate in the following season.
- 6.6. Additional rules which may apply solely to the League Cup and Plate competitions will, if any, be advised to participants in a start-up document for the League Cup/Plate.

7. RESULT RECORDING & REPORTING

- 7.1. Both Team Captains should verify the Result Slip by means of a signature. It is the responsibility of each Team Captain to ensure that his Team does not field an ineligible Player. If it is subsequently discovered that a Team has fielded a Player who may be ineligible, this shall be reported to the League Secretary. The signed Result Slip will not create a bar to the League Secretary applying Rule 3.1.1 and/or the WPA applying Rule 3.1.2.
- 7.2. The Home Team Captain is responsible for retaining a paper copy of the Result Slip. This should be passed to the League Secretary if and when requested at any time up to the end of the calendar year in which the League Season occurs.
- 7.3. Results shall be reported by both Team Captains for every fixture using the appropriate Link on the WPA Website.
- 7.4. Results of fixtures shall be reported not later than midnight on the Saturday following the day on which the fixture is played. In the event of a failure of the either Team Captain to report a result on time, the League Secretary will rely on the result, if any, submitted by the other Team Captain.

Welsh Pétanque Association

LEAGUE AND LEAGUE CUP/PLATE RULES



- 7.5. If a Team Captain fails to report a League result by the deadline on more than two occasions in the same season, then the following penalties shall apply;
- 7.5.1. Failure on three occasions - 1 League point deducted;
- 7.5.2. Failure on five occasions - 2 League points deducted;
- 7.5.3. Failure on seven or more occasions – 4 League points deducted.
- 7.6. If a Team Captain fails to report a League Cup/Plate result by the deadline on more than one occasion in the same season, then the following penalties shall apply;
- 7.6.1. Failure on two occasions - 1 Pool point deducted;
- 7.6.2. Failure on three occasions - 2 Pool points deducted;
- 7.6.3. Failure on four or more occasions – 3 Pool points deducted.
- 7.7. A Team Captain may appeal to the League Secretary should they feel that a result has been reported or published incorrectly. In this case the League Secretary will request the paper copy of the Result Slip from the Home Team Captain.
- 7.8. If and when requested Results Slips are to be sent by the Home Team Captain by surface mail to the League Secretary:
- Vickie Adshead, 11 Chartwell Drive, Lisvane, Cardiff. CF14 0EZ
- 7.9. If a Result Slip is received without being countersigned by both captains, it will be deemed that they agree with the result as reported and that they waive the right to appeal against the result should it be incorrect.

8. PROMOTION & RELEGATION

- 8.1. Promotion and relegation between the Divisions shall take place at the end of each season in accordance with the following general rules:
- 8.1.1. If there are less than 8 Teams in the Division then the Team finishing top will be promoted from each Division and Team finishing bottom will be relegated from each Division with the proviso that there shall be no promotion from the 1st Division and no relegation from the lowest Division.
- 8.1.2. If there are 8 Teams or more in the Division then the Teams finishing top and runner-up will be promoted from each Division and the

Welsh Pétanque Association

LEAGUE AND LEAGUE CUP/PLATE RULES



Teams finishing bottom and next to the bottom will be relegated from each Division with the proviso that there shall be no promotion from the 1st Division and no relegation from the lowest Division.

8.2. Notwithstanding the provisions of Rules 8.1 and 8.2, promotion and relegation may be amended before the commencement of the following season in the following circumstances:

8.2.1. if the number of Teams entered for the new season causes there to be some Divisions with 8 Teams and some with 7; and/or

8.2.2. a Team/Teams who competed in the previous season does/do not enter the competition for the following season; and/or

8.2.3. a new team entering the competition for the following season will be placed in the lowest division; then

the League Secretary will submit recommendations to the Management for their approval regarding the number of teams that should be promoted and relegated from each Division to maintain a balance in the size of each Division.

WPA Executive Committee

Date: **18 May 2026**

Review Date: **January 2027**

Appendices

Appendix 1 – [Section 5 Flowchart](#)

Welsh Pétanque Association

LEAGUE AND LEAGUE CUP/PLATE RULES

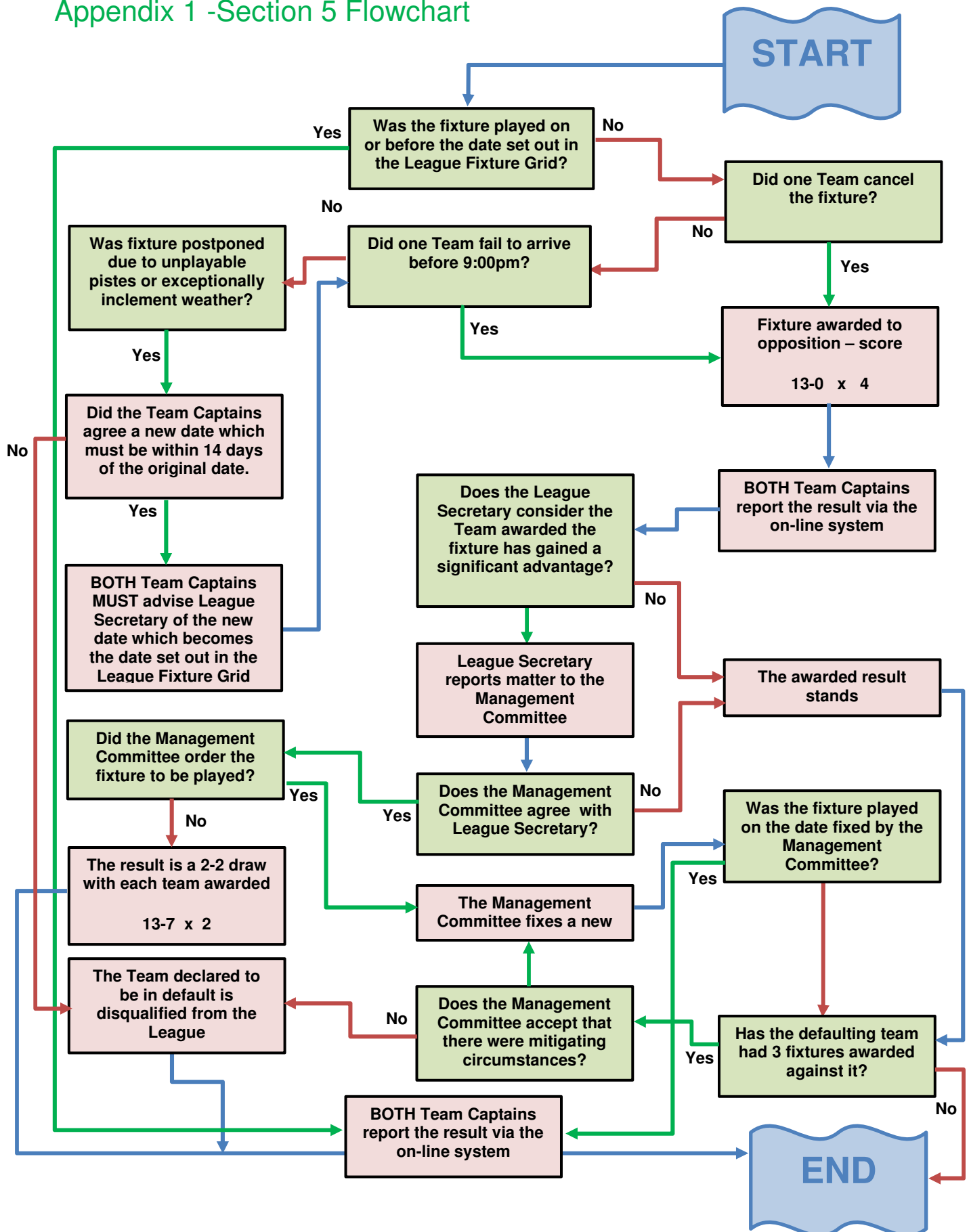


Welsh Pétanque Association

LEAGUE AND LEAGUE CUP/PLATE RULES



Appendix 1 -Section 5 Flowchart





Welsh Pétanque Association



www.welshpetanque.org.uk